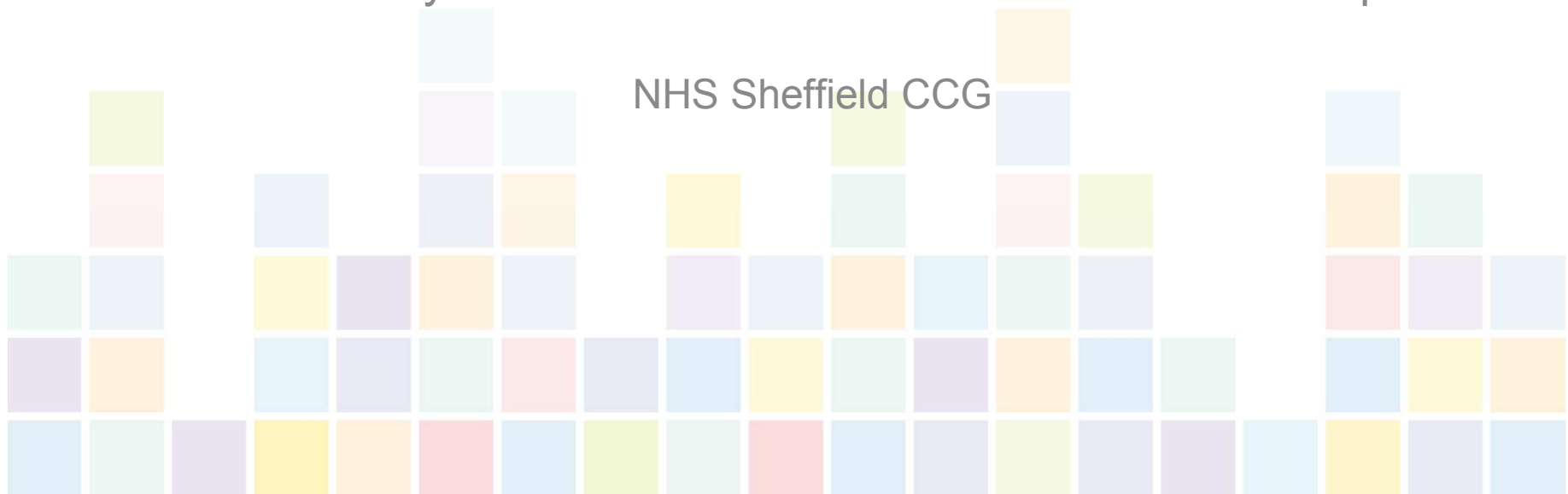


Neighbourhoods Update

Nicki Doherty Director of Delivery Care Outside of Hospital
+ Dr Anthony Gore Clinical Director Care Outside of Hospital

NHS Sheffield CCG





What is a Neighbourhood..

a geographical population of around 30-50,000 people supported by joined up health, social, voluntary sector and wider services to support people to remain independent , safe and well in their community.

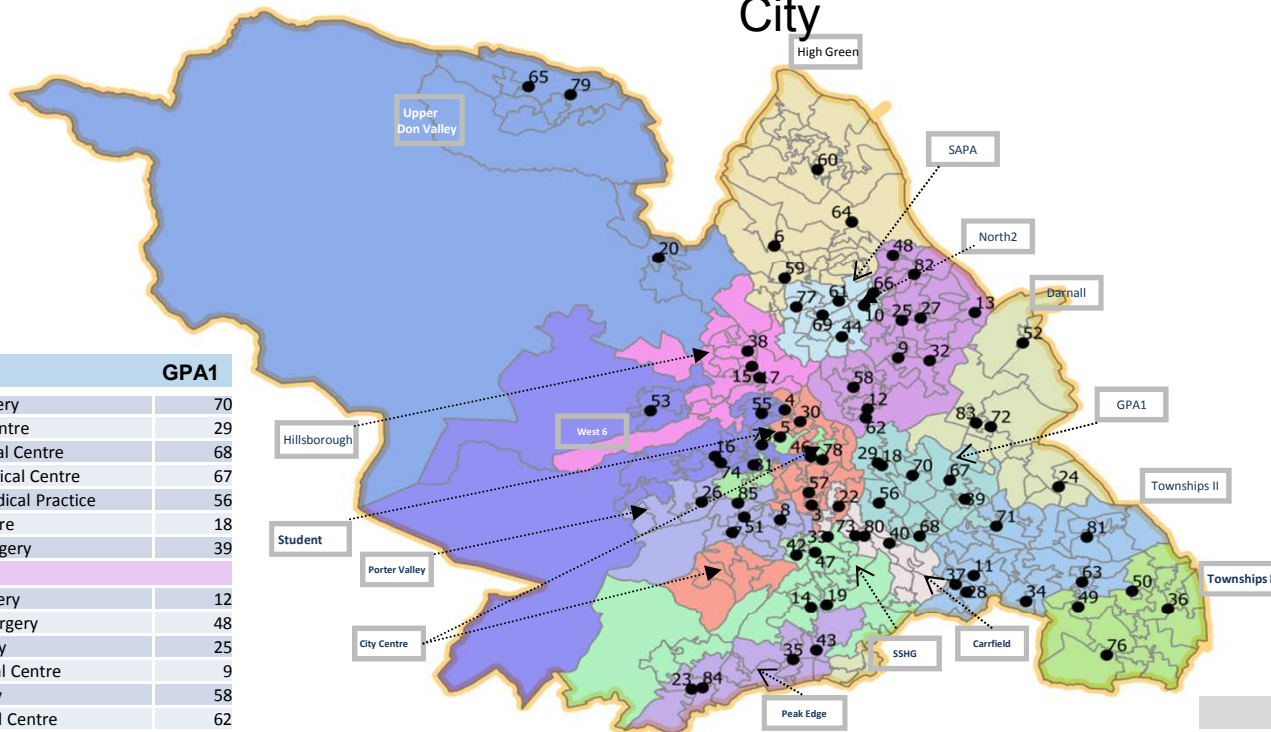


Why Neighbourhoods?

- General Practice at Scale
- Wider integrated working across the health and social care system
- Targeting Care to priority patient groups
- Managing Resources
- Empowering Neighbourhoods



16 Neighbourhoods Across Sheffield City



4 in Central
4 in Hallam & South
3 in North
5 in West

- GP Association 1
- North2
- Townships (I)
- West4
- Darnall
- Carrfield
- Peak Edge
- City Centre Practices
- SSHG
- SAPA
- High Green
- Hillsborough
- Upper Don Valley
- Universities
- Porter Valley
- Townships (II)
- Sheffield LA Boundary

GPA1	
Dovercourt Surgery	70
Duke Medical Centre	29
East Bank Medical Centre	68
Manor Park Medical Centre	67
Norfolk Park Medical Practice	56
Park Health Centre	18
White House Surgery	39
North 2	
Burngreave Surgery	12
Dunninc Road Surgery	48
Firth Park Surgery	25
Page Hall Medical Centre	9
Pitsmoor Surgery	58
Sheffield Medical Centre	62
Shiregreen Medical Centre	82
The Flowers Health Centre	27
Upwell Street Surgery	32
Wincobank Medical Centre	13
Townships I	
Crystal Peaks Medical Centre	50
Mosborough Health Centre	76
Owlthorpe Medical Centre	49
Sothall and Beighton Health Centres	36
Hackenthorpe Medical Centre	63
West 6	
Broomhill Surgery	31
Manchester Road Surgery	16
Selborne Road Medical Centre	74
Stannington Medical Centre (Shurmer)	53
The Crookes Practice	75
Walkley House Medical Centre	55
Darnall	
Clover Group Practice	83
Darnall Health Centre (Mehrotra)	72
Handsworth Medical Practice	24
The Medical Centre	52

SAPA	
Barnsley Road Surgery	66
Buchanan Road Surgery	61
Elm Lane Surgery	10
Norwood Medical Centre	44
Southey Green Medical Centre	69
The Health Care Surgery	77
High Green	
Chapelgreen Practice	60
Ecclesfield Group Practice	21
Foxhill Medical Centre	59
Grenoside Surgery	6
Mill Road Surgery	64
Hillsborough	
Dykes Hall Medical Centre	15
Far Lane Medical Centre	38
Tramways Medical Centre (Milner)	17
Tramways Medical Centre (O'Connell)	41

Upper Don Valley	
Deepcar Medical Centre	79
Oughtibridge Surgery	20
Valley Medical Centre	65
Student	
University Health Service Health Centre	46
Porter Valley	
Falkland House	7
Greystones Medical Centre	51
Nethergreen Surgery	26
Rustlings Road Medical Centre	85
The Hollies Medical Centre	8
Townships II	
Birley Health Centre	34
Charnock Health Primary Care Centre	28
Jaunty Springs Health Centre	11
Richmond Medical Centre	71
Stonecroft Medical Centre	37
Woodhouse Health Centre	81

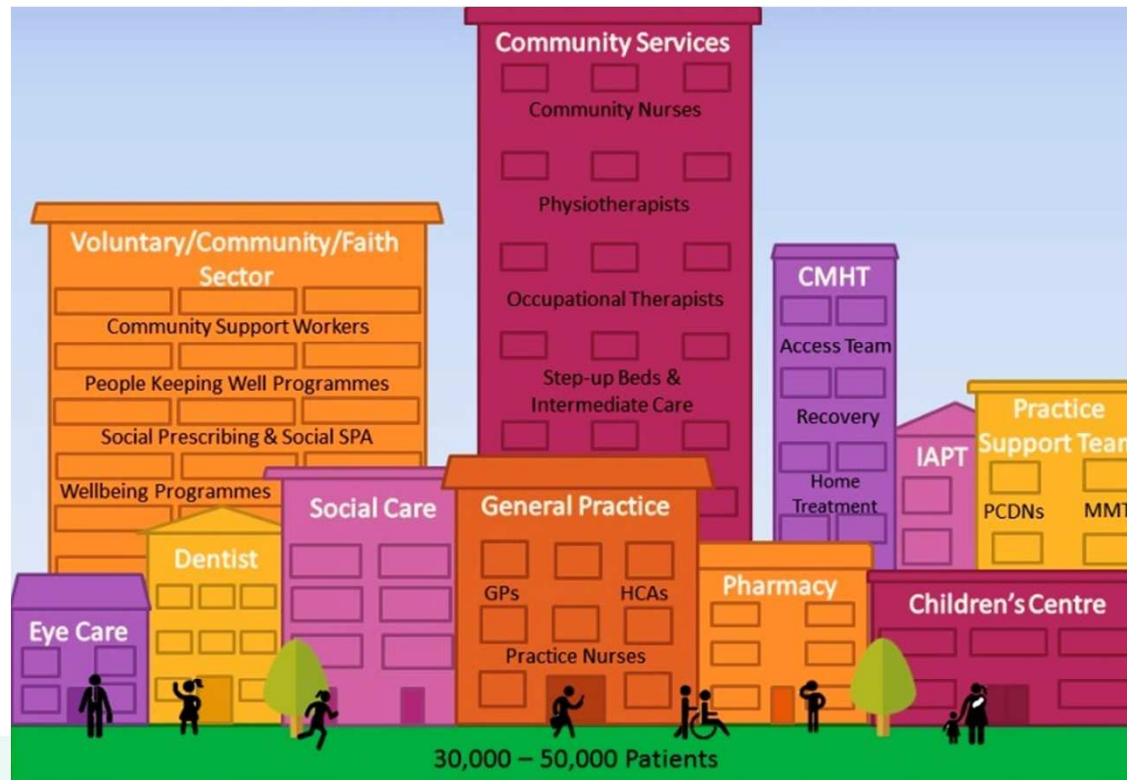
Carrfield	
Carrfield Medical Centre	73
Gleadless Medical Centre	40
Heeley Green Surgery	80
Sharrow Lane Medical Centre	3
The Mathews Practice	22
Peak Edge	
Abbey Lane Surgery	14
Avenue Medical Practice	35
Baslow Road And Shoreham Street Surgeries	23
The Meadowgreen Group Practice	43
Totley Rise Medical Centre	84
City Centre Practices	
Crookes Valley Medical Centre	5
Devonshire Green Medical Centre	78
Harold Street Medical Centre	4
Porter Brook Medical Centre	57
Upperthorpe Medical Centre	30
Clover City Practice	54
SSHG	
Carterknowle And Dore Medical Practice	42
Sloan Medical Centre	33
Veritas Health Centre	47
Woodseats Medical Centre	19

Sheffield

16 Neighbourhoods

Aim to ...

- Improve health and care outcomes
- Improve quality of care particularly Long Term Conditions
- Reduce unnecessary health and care service use
- Provide health and care services closer to home



How do Neighbourhoods affect Sheffield Patients?



You won't go to hospital unless you really need to thanks to more pro-active joined-up care in the community – especially older people and those with long-term conditions.



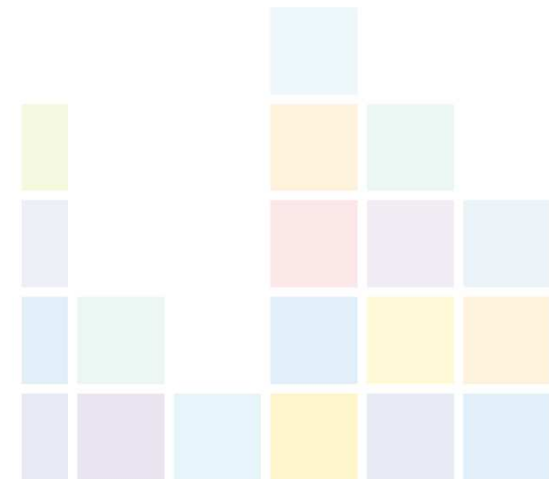
You have the opportunity to work directly with health services in your community to ensure the right health, social care and community services are accessible now and in the future.



You can improve your quality of life with better support to manage your own health and wellbeing.

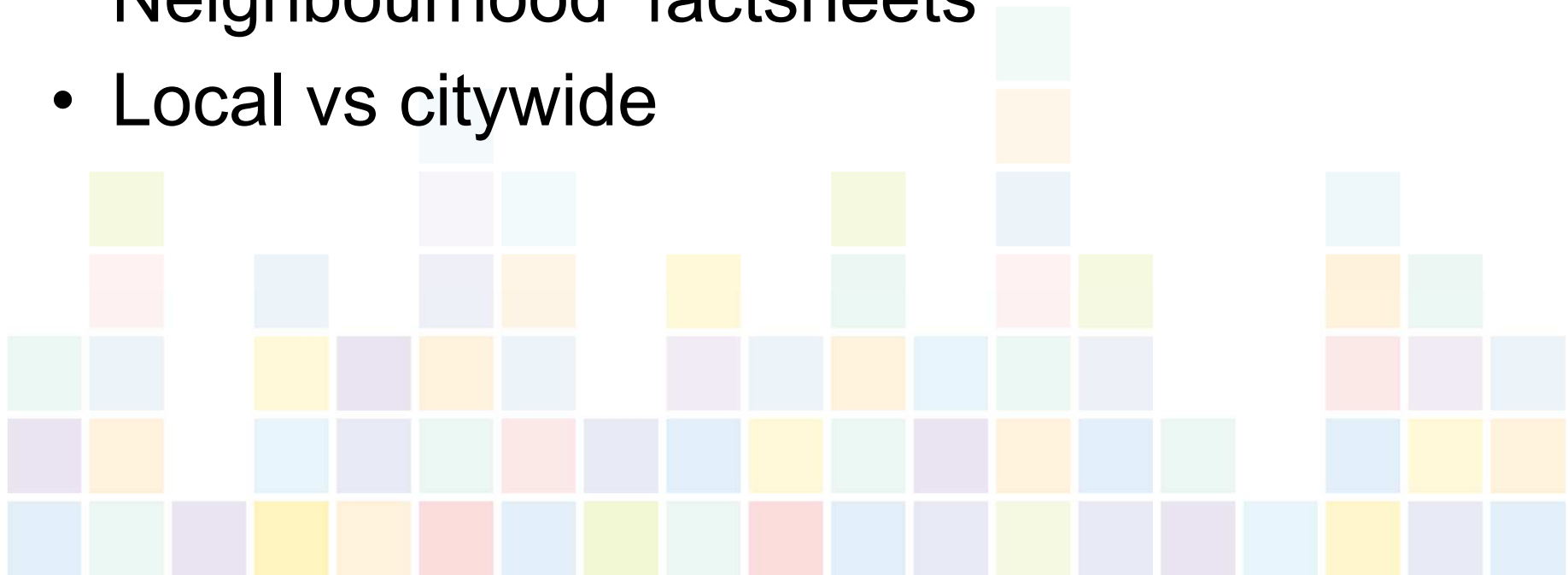


In the near future, you'll have one unified patient record which means you're less likely to have to repeat 'your story' to different professionals, in different parts of the 'system'.



Prioritising local needs first

- Take a look at the ‘Welcome to our Neighbourhood’ factsheets
- Local vs citywide



What's happening in Neighbourhoods right now?

Page 25



Closer working,
sharing ideas



Proactive care
for older people



More joined-up
services



Social
prescriptions



Improve access
to mental health



Workforce
sharing



Extend teams in
general practice



Improve hospital
discharge



Support families
living with
dementia



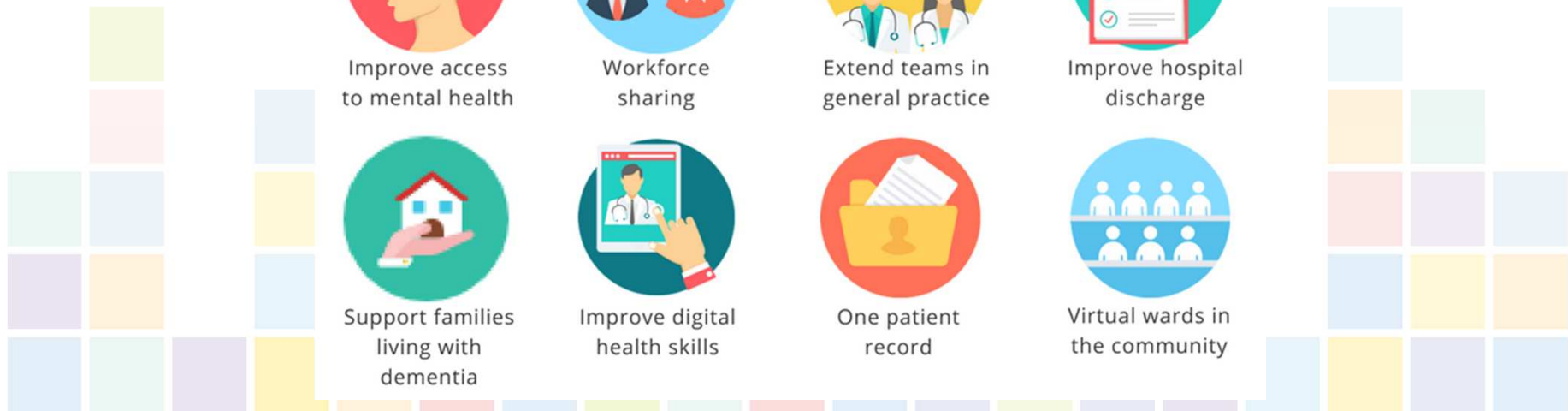
Improve digital
health skills



One patient
record



Virtual wards in
the community



What's happening in Neighbourhoods right now?

- **Closer working** – practices attend regular Neighbourhood meetings together now to share ideas, knowledge and planning.
- **Proactive care for older people** – better case management planning for older people e.g. Crystal Peaks.
- **More joined up services** – Upper Don Valley Neighbourhood are working with their local Community Forum.
- **Social prescriptions** – citywide approach utilising community support workers, People Keeping Well work.

What's happening in Neighbourhoods right now?

- **Improve access to mental health** – Sheffield has recently been awarded over £2m to join up Improving Access to Psychological Therapy (IAPT) services with 10 condition pathways such as musculoskeletal, pain, Long Term Conditions etc. They're working with Neighbourhoods now to develop these both at local and citywide level. These will help Neighbourhoods with specific Mental Health needs and improve identification of anxiety and depression.
- **Workforce sharing** – One Neighbourhood is using WhatsApp as a way to manage rotas and fill in gaps if a staff member calls in sick.
- **Extending teams** –
- **Hospital discharge** – lots to come on this that will help avoid people being delayed when being discharged into the community.

What's happening in Neighbourhoods right now?

- **Support families living with dementia** – setting up cafes, drop-ins for family members etc. with local voluntary and community organisations.
- **Digital health skills** – Sheffield has been chosen as a pilot to trial improving digital literacy with NHS England & Good Health Foundation.
- **One patient record** – this is on its way.
- **Virtual wards** – successful pilot in GPA1 Neighbourhood – now being tested across 4 Neighbourhoods in Central locality (20 practices) with hope we can spread citywide later in year.